




future technology products for a healthier and happier future

 <p style="text-align: right;">ENZYMED MMFSG-5000</p> <p style="text-align: right;">This device is certified in accordance with Appendix II, Section 3 of Directive 93/42 EEC and bears the CE symbol </p> <p>The Device : MMFSG-5000 To operate the device at least one of the following applicators has to be connected.</p>	
 <p>Mat-Applicator MMFMA-5800</p>	
 <p>Lounge-Applicator MMFLA-5000</p>	

future technology products for a healthier and happier future

 <p>Blanket-Applicator</p> <p>MMFDA-5080</p>	
 <p>Seat-Applicator</p> <p>MMFLA-5080</p>	
 <p>Pillow-Applicator</p> <p>MMFKA-5020</p>	

future technology products for a healthier and happier future



Rod-Applicator

MMFSA-5000



Box- Applicator (Box)

MMFFA-5000



Ergonom- Applicator

MMFUA-5000

future technology products for a healthier and happier future



Intensive- Applicator

MMFIA-5000



Tinnitus- Applicator

MMFTA-5000



Manschetten- Applicator

MMFBA-5020

future technology products for a healthier and happier future



Light-rod- Applicator (red) MMFLS-6100
Light-rod- Applicator (green) MMFLS-6200
Light-rod- Applicator (blue) MMFLS-6300



Chroma therapy with 5 LED lights

Ergonom-Light- Applicator (red/infrared) MMFEL-6200



Ergonom-Light- Applicator
(yellow/orange/red/green/blue)





MMFEL-6500

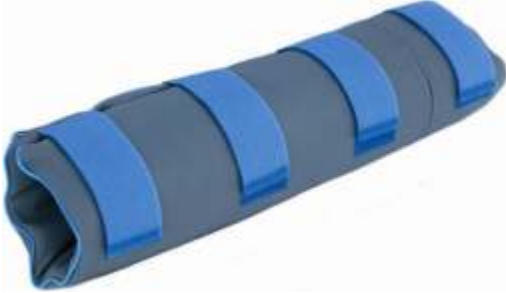
future technology products for a healthier and happier future

		
 <p>Skin and whole body applicator with red/infrared and Pulse magnetic therapy</p> <p>3 fold-Light-Applicator (red/infrared) MMFLF-6000</p>		
<p>Several Tripods for various applicators available</p>		

future technology products for a healthier and happier future

	
<p><i>Veterinary applicators</i></p>	
	
<p>Horse-Applicator</p>	<p>MMFPA-5080</p>

future technology products for a healthier and happier future



Gaiter-Applikator

MMFGA-5040

Manschetten-Applikator

MMFBA-5020



Veterinary-Applikator

MMFVA-5040

Applicators		Intensity level 10
Mat applicator (mat)	100 μ T	(1 gauss)
Blanket applicator	100 μ T	(1 gauss)
Pillow applicator (pillow)	100 μ T	(1 gauss)
Surface applicator (box)	400 μ T	(4 gauss)
Rod applicator (rod)	200 μ T	(2 gauss)
Underwater applicator	200 μ T	(2 gauss)
Intensive applicator	1000 μ T	(10 gauss)
Tinnitus applicator	100 μ T	(1 gauss)
Tube applicator (ø 30 cm)	600 μ T	(6 gauss)
Tube applicator (ø 50 cm)	600 μ T	(6 gauss)
Tube applicator (ø 70 cm)	400 μ T	(4 gauss)
Cuff applicator	100 μ T	(1 gauss)
Veterinary applicator	100 μ T	(1 gauss)
Horse applicator	100 μ T	(1 gauss)

future technology products for a healthier and happier future

Technical data	
Type	ENZYMED MMFSG-5000
Mains voltage	230 V AC, 50 Hz
Operating voltage, control device	15 V DC
Operating voltage, applicators	15 V DC (max.)
Nominal output, control device / applicators	8,1 VA (max.)
Nominal frequency	div. frequency patterns
Type of application class	BF
Protection class	II
MPG classification	2a
Operating temperature	10 - 35° C
Storage temperature	0 - 35° C

future technology products for a healthier and happier future

3. Device technology

Program	Time	Intensity	Effects
P1 „Calming“	8 min.	4 min. level 2 2 min. level 4 2 min. level 3	inhibits inflammation dampens the sympatheticus lowers blood pressure
P2 „Stimulation“	16 min.	3 min. level 5 4 min. level 8 4 min. level 10 4 min. level 6	Bone regeneration
P3 „Fitness“	12 min.	4 min. level 5 4 min. level 8 4 min. level 6	Stimulation enhances circulation raises blood pressure neural tissue regeneration
P4 „Regeneration“	20 min.	4 min. level 4 4 min. level 6 4 min. level 9 4 min. level 7 4 min. level 5	Soft-tissue regeneration cartilage regeneration
P5 „Harmonization“	20 min.	4 min. level 2 4 min. level 4 4 min. level 5 4 min. level 6 4 min. level 4	Harmonization of vegetative disturbances

Treatment times can be selected from 6 levels (1, 4, 8, 12, 16, 20 min.) and intensity in 10 levels (10% intervals) as alternative settings to accommodate individual tolerance, therapeutic needs or medical prescriptions.

- ▲ Program 1 functions mainly within the 4 Hz range,
- ▲ Program 2 mainly in the 20 Hz range,
- ▲ Program 3 is a multi-frequency program and functions mainly within the 0,5 - 100 Hz range
- ▲ Program 4 functions mainly within the 4 - 22 Hz range
- ▲ Program 5 functions at below 1 Hz.



More infos: www.sanatio.net = greek: Healing